

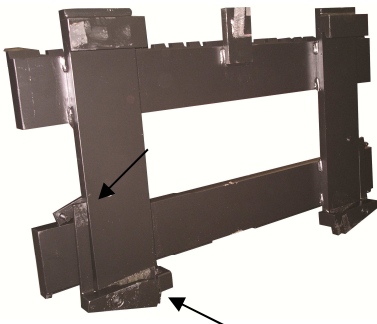
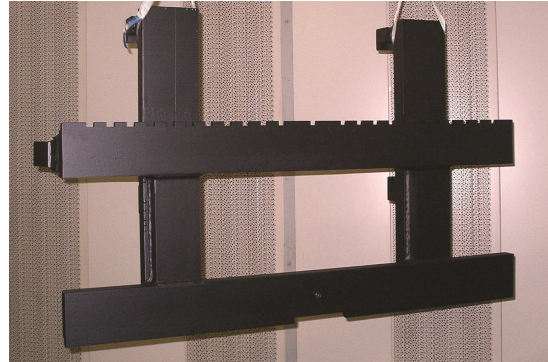


CARRIAGE ADAPTER **(Quick-change version)**

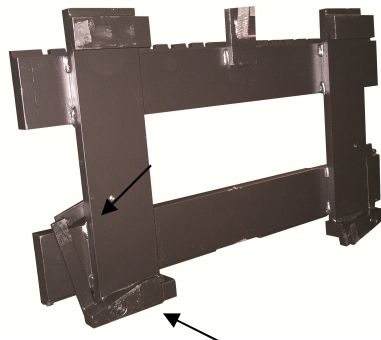
THE ATTACHMENT AT YOUR DIMENSIONS

application :

Those carriages are used, when you have different mounting classes on the side of the load and on liftmast side. The quick-change version allows you to mount or dismount in shortest time.

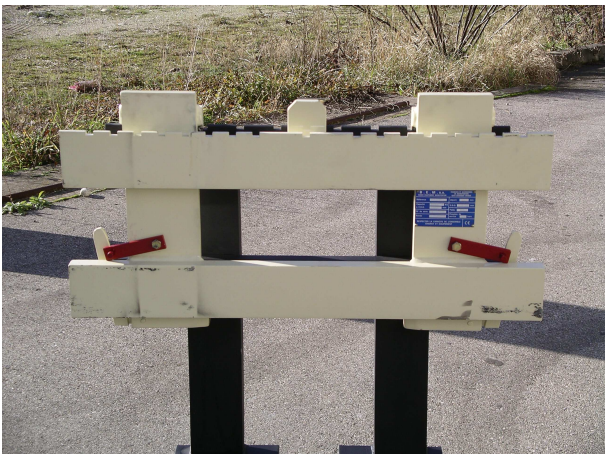


Position unlocked



Position locked

Schnellwechselausführung



technical characteristics :

- ISO- mounting classes
- capacities from 1,5t/LC 500 mm up to 8t/LC 600 mm (others on demand)
- 2 models :
 - quick-change carriage (fast dismounting of the attachment)
 - Adaptation of different mounting classes (different classes on mast- and on load side)

Options :

- other mountings on demand (f. e. Pin-Type, SSFP...)
- different coatings for securing the load