



THE ATTACHMENT TO YOUR DIMENSIONS

application :

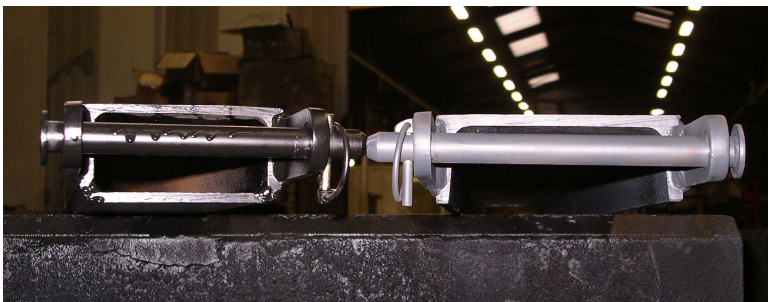
Easily mountable, the extensions are build for the handling of long loads and avoid that the load would dump with too short forks.



technical characteristics :

- open or closed version depending on load length and weight
- also mountable on forks with additional wear-zone (valid only for closed version)
- Ideally load will be distributed equally on whole length of extension
- carrying fork must support min. 60% of the length of the extension
- fixation with a strong bolt behind the forks bending point
- chamfered and especially shaped tip to ensure easy drive-in

versions available ***open or closed version***



Options :

- Antislippage coating
- also available for pivoting or foldable forks
- rounded form
- other ways of fixing
- version Butagaz (Gas containers)
- also for fork- and multipallettclamps